

scan[®]*pack*

StroPack[®]

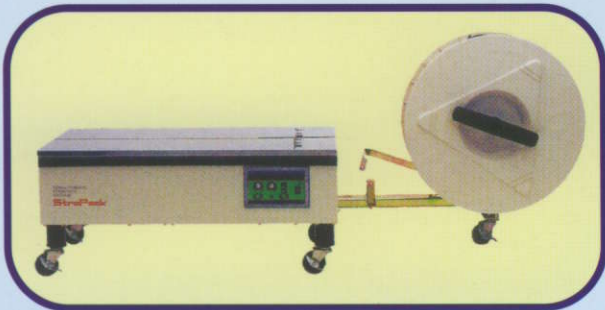
SEMI-AUTOMATIC STRAPPING MACHINE



D-52,
D-53

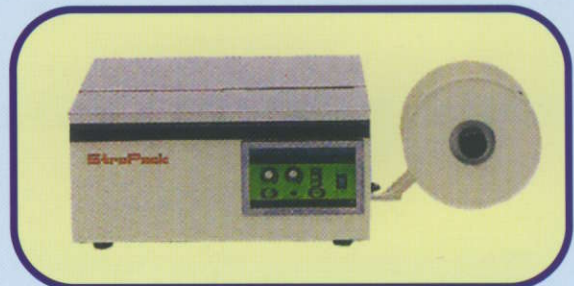


D-52NA



D-52LB

D-52
DeskTop



StrapPack® D-53, D-52, D-52LB

SEMI-AUTOMATIC STRAPPING MACHINE

DESK-LIKE BODY

It provided a broad work space and maximum foot room.

SMALL & FUNCTIONAL

Sealing head is located in the right side of the body in order to best utilize the working surface of the table top. Machine body is small and light, easy to maneuver, yet strong and sturdy for heavy packages.

VARIABLE AND CONSISTENT TENSION

Tension can easily be adjusted from low to high with a single dial. In addition, tension mode switch offers standard or high tension mode (only D-52 type) in order to provide a wider range of tension.

QUICK HEATER

Only requires 30 seconds to reach operating temperature.

HIGH SPEED CYCLE

Cycle starts immediately after the strap is inserted into the band guide and completes the cycle faster than ever.

ENERGY CONSERVATION FEATURE

The motor automatically stops when the machine is idle for a while, and starts again once strap is reinserted into the band guide.

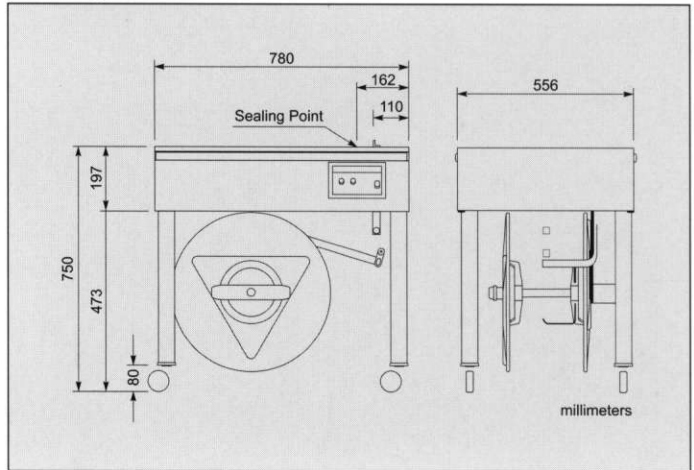
STRAP SIZE OPTIONS

This Model can be used with strap, width ranging from 5 mm to 15,5 mm.

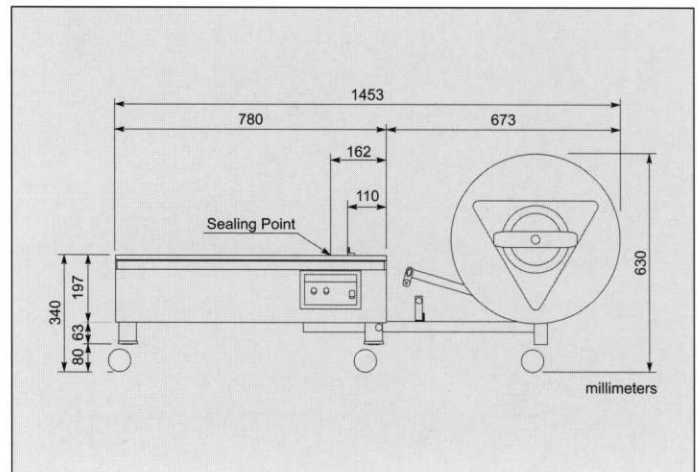
STANDARD SPECIFICATIONS

	D-52, D-53	D-52LB
DIMENSIONS	width	780
	depth	556
	table height	750
	height	770 mm
WEIGHT	50 kg	55 kg
PACKAGE SIZE	width 100 mm - free depth 30 mm - free	
STRAP WIDTH	5, 6, 9, 12 or 15,5 mm	
POWER SUPPLY	100, 220, 240V single phase 50/60 Hz 0,4KVA	

D-52, D-53



D-52LB



DISTRIBUTED BY: